

# Section 1 AUSI Definitions

**Record of change:** This version is October 2006 (1006) and replaces May 2006 (0506)  
May 2006 (0506) replaced October 2005 (1005)





# DEFINITIONS

## **Active AUSI Instructor:**

See “Registered AUSI Instructor.

## **Approved Equivalent:**

Equivalency as approved by the AUSI Review Board.

## **Assistant Instructor:**

A qualified, approved instructor who can be used to assist an AUSI Instructor.

## **AUSI Course Director:**

The AUSI Instructor Trainer in charge of an AUSI Instructor Training Program.

## **AUSI Cross Over:**

An AUSI Orientation program conducted to familiarise professionals from other recognised agencies such as dive masters, assistant instructors and instructors with AUSI Standards, Procedures and Teaching Guidelines.

## **AUSI Examiner:**

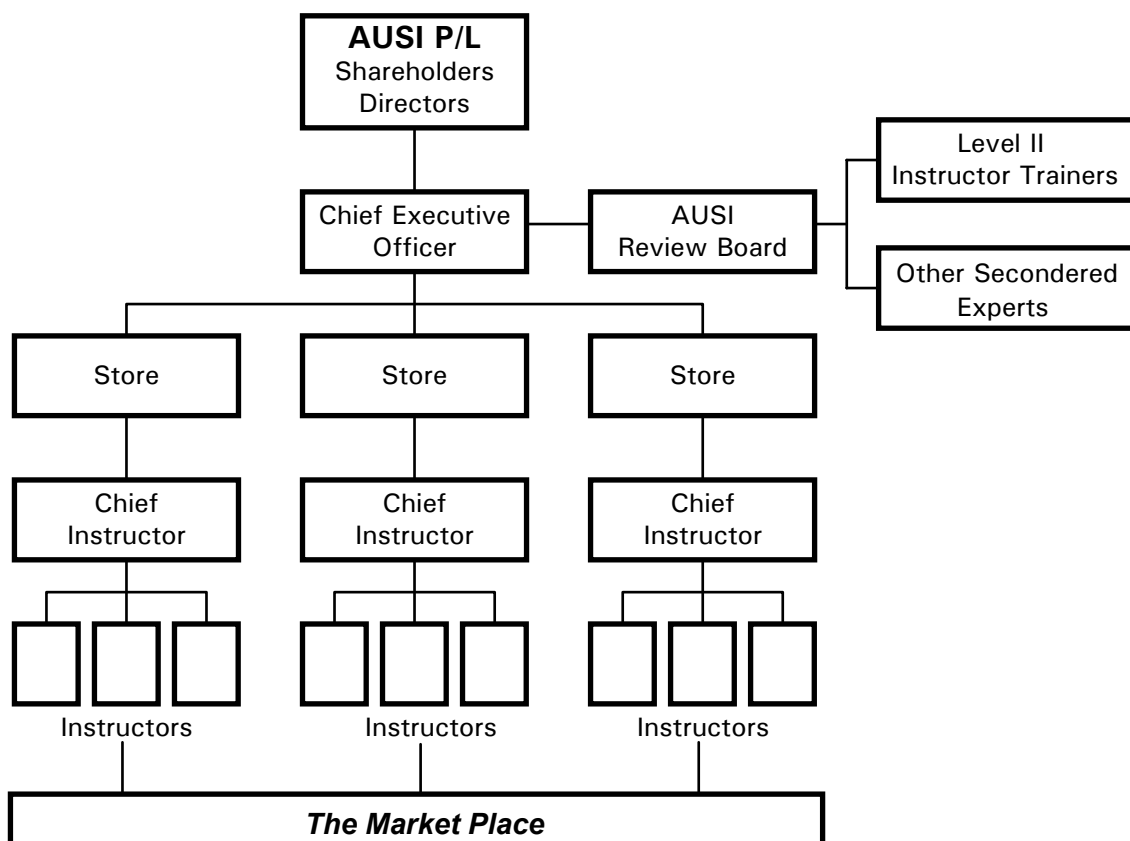
An approved independent AUSI Level II Scuba Instructor Trainer appointed by AUSI Head Office to conduct the final examination phase of an AUSI Level II Scuba Instructor Course.

## **AUSI Open Licence:**

A licence granted by AUSI to approved training organisations who wish to operate the AUSI Training System under their own corporate identification.

## **AUSI Organisational Structure:**

The chart below shows the relationship between AUSI and the market place.



**AUSI Review Board:**

The AUSI Review Board is a board consisting of the Chief Executive Officer and at least two AUSI Instructor Examiners plus appointed experts.

The AUSI Review Board is responsible for:

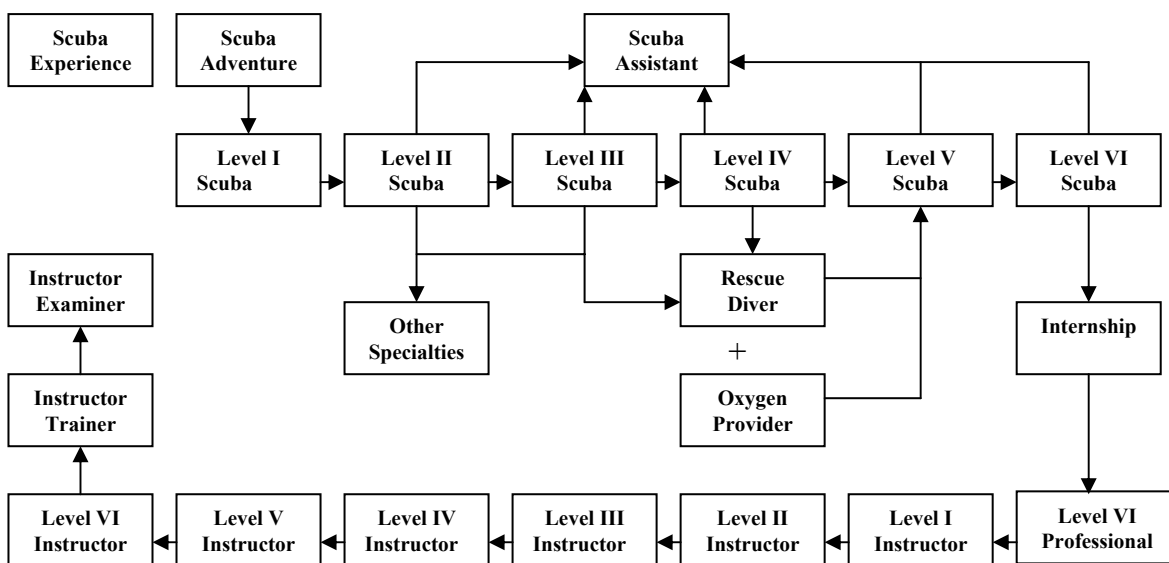
- (a) Standards reviews and waivers,
- (b) Approval of equivalences,
- (c) Representation on external committees such as Standards Australia,
- (d) Instructor renewal waivers,
- (e) Assessment of cross-over instructor status,
- (f) Coordination of AUSI Instructor Training Programs,
- (g) Appointment of AUSI Scuba Instructor Examiners,
- (h) Quality control and complaints procedures, and
- (i) Discipline of AUSI instructors.

**AUSI Scuba Assistant:**

A diver who is has completed an AUSI Level I Scuba Instructor course but has not met the certification requirements as an AUSI Level I Scuba Instructor. Whilst an AUSI Scuba Assistant is able to assist an AUSI Scuba Instructor to a level equivalent to their diving ceretification, instructor/student ratios cannot be increased.

**AUSI Scuba Certification Pathway:**

The chart below shows the relationship between the various AUSI Scuba Awards.



### **AUSI Scuba Learning Module:**

An AUSI Scuba Learning Module is a theory module consisting of student course notes and a lesson review, which is formally presented by an AUSI Scuba Instructor during the training process.

There are 30 modules in all, designed to assist learning from AUSI Scuba Adventure to AUSI Scuba Instructor.

The table below summarises the AUSI Scuba Training System's Scuba Learning Modules.

<b>Module</b>	<b>Title</b>	<b>AUSI Scuba Levels &amp; equivalents</b>
<b>1</b>	<b>Introduction to Scuba Diving</b>	Scuba Adventure (Resort Diver) Level 1 (Supervised Scuba Diver) & Level 2 (Open Water)
<b>2</b>	<b>The Diver Underwater</b>	Level 1 (Supervised Scuba Diver) & Level 2 (Open Water)
<b>3</b>	<b>Dive Planning</b>	Level 2 (Open Water)
<b>4</b>	<b>Diving First Aid (1)</b>	Level 2 (Open Water)
<b>5</b>	<b>Special Interest Diving</b>	Level 3 (Advanced)
<b>6</b>	<b>Underwater Navigation</b>	Level 3 (Advanced)
<b>7</b>	<b>Night Diving</b>	Level 3 (Advanced)
<b>8</b>	<b>Deep Diving</b>	Level 3 (Advanced) & Level 4 (Deep Diver)
<b>9</b>	<b>Accident Prevention &amp; Management</b>	Level 5 & Rescue Diver
<b>10</b>	<b>Respiration and Circulation</b>	Level 5 & Rescue Diver
<b>11</b>	<b>Life Support Techniques</b>	Level 5 & Rescue Diver
<b>12</b>	<b>Diving First Aid (2)</b>	Level 5 & Rescue Diver
<b>13</b>	<b>Diving Injuries</b>	Level 5 & Rescue Diver
<b>14</b>	<b>General First Aid</b>	Level 5 & Rescue Diver
<b>15</b>	<b>Dive Master Duties</b>	Level 6 (Dive Master)
<b>16</b>	<b>Conducting Group Scuba Dives</b>	Level 6 (Dive Master)
<b>17</b>	<b>Cylinders and compressors</b>	Level 6 (Dive Master)
<b>18</b>	<b>Scuba Mechanics</b>	Level 6 (Dive Master)
<b>19</b>	<b>Gas Behaviour</b>	Level 6 (Dive Master)
<b>20</b>	<b>Dive Tables and Computers</b>	Level 6 (Dive Master)
<b>21</b>	<b>Basic Seamanship</b>	Level 6 (Dive Master)
<b>22</b>	<b>Basic Navigation</b>	Level 6 (Dive Master)
<b>23</b>	<b>AUSI Philosophy</b>	Level 1 Instructor (Assistant) & Level 2 Instructor (Open Water)
<b>24</b>	<b>Classroom Presentation</b>	Level 1 Instructor (Assistant) & Level 2 Instructor (Open Water)
<b>25</b>	<b>Practical Skills Training</b>	Level 1 Instructor (Assistant) & Level 2 Instructor (Open Water)
<b>26</b>	<b>Ocean Training Dives</b>	Level 1 Instructor (Assistant) & Level 2 Instructor (Open Water)
<b>27</b>	<b>Student Assessment &amp; Certification</b>	Level 2 Instructor (Open Water)
<b>28</b>	<b>Continuing Education</b>	Level 2 Instructor (Open Water)
<b>29</b>	<b>Medical Aspects of Scuba Diving</b>	Level 2 Instructor (Open Water)
<b>30</b>	<b>Legal Aspects of Diving Instruction</b>	Level 2 Instructor (Open Water)

### **AUSI Snorkel Diver Certification Levels:**

The following table shows the depth requirements for various levels of AUSI Snorkel Diver certification.

<b>Certification Level</b>	<b>Snorkel Diver</b>	<b>Snorkel Diver Instructor</b>
Level I	3 metres (10 ft)	6 metres (20 ft)
Level II	6 metres (20 ft)	9 metres (30 ft)
Level III	9 metres (30 ft)	12 metres (40 ft)

**NOTE:** 1. The certifying instructor shall be at the same level or higher than the level of AUSI Snorkel Diver certification being issued eg to issue a Level III Snorkel Diver certification the instructor must be an AUSI Level III Snorkel Diver Instructor or higher.  
2. For depths greater than nine metres (30 ft) see AUSI Free Diver Specialty.

### **Certified Medically Fit:**

Deemed medically fit for the activity by qualified medical practitioner.

### **Chief Executive Officer:**

Appointed by the AUSI Directors to administer the day to day running of AUSI.

### **Chief Instructor:**

An instructor appointed by a registered AUSI Facility who is responsible for ensuring that AUSI Procedures, Standards and Teaching Guidelines are met by the facility and its instructors.

### **Current:**

In reference to diving medical, workplace first aid, CPR and oxygen provider certificates, the term current means valid for five years unless local authorities require less.

**NOTE:**

AUSI Professionals are reminded that they must ensure that their medical, first aid, CPR and oxygen provider qualifications remain current.

### **Direct Supervision:**

Instructor must be in the water in direct visual contact with students and/or assistant instructor.

### **Diving Medical:**

#### **AUSI Snorkel Programs**

- (1) When a student is participating in an AUSI Snorkel program they are required to be medically fit to snorkel dive. To assess the student's fitness to snorkel dive use the *AUSI Medical History Form* or an approved equivalent. An *AUSI Medical History Form* can be photocopied from the AUSI Forms section of this manual, or downloaded from [www.ausi.com.au](http://www.ausi.com.au).
- (2) A full diving medical is required if a positive response is received for any of the relevant conditions listed in Section C of the *AUSI Medical History Form* or if any doubt exists concerning answers to Section B of the form.
- (3) AUSI Snorkel Diving Instructors are required to undergo an annual diving medical for snorkel diving and, where possible, the medical should be performed by a doctor qualified in diving medicine.

**NOTE:** For an up to date list of qualified diving doctors go to [www.spums.org.au/Divedocs](http://www.spums.org.au/Divedocs).

## **Diving Medical (continued):**

### **AUSI Scuba Programs**

- (1) When a student is participating in an AUSI Scuba Diver training they are required to be medically fit to scuba dive. To assess the student's fitness to scuba dive use the *AUSI Medical History Form*, which can be photocopied from the AUSI Forms section of this manual, or downloaded from [www.ausi.com.au](http://www.ausi.com.au), or approved equivalent, a full diving medical is required if a positive response is received for any of the conditions listed in Section C of the form or if any doubt exists concerning answers to Section B of the form.

**NOTE:** In Australia, AUSI Level II Scuba Diver (Open Water) trainees require a full diving medical to Australian Standard AS 4005.1. All diving medicals should be conducted by a doctor trained in diving medicine, however a general practitioner familiar with the student's history can be used provided the practitioner has read Appendix A, B and C of AS 4005-2000 "Training and certification of recreational divers; Part 1: Minimum entry-level SCUBA diving" and uses the Typical Medical Form, from Appendix B of AS 4005.1-2000.

- (2) AUSI Level VI Scuba Professionals and AUSI Scuba Instructors are required to be medically fit to scuba dive. Those who are working as occupational divers in the recreational diving industry in Australia and New Zealand are required to have a diving medical for scuba diving as defined in Australian Standard AS/NZS 2299.1, where it is issued within 12 months. In Queensland additional tests are required, they are: an audiometry test; an ECG (if over 35 years) and a chest X-ray every five years or at the diving medical practitioners discretion.

**NOTE:** 1. Instructors should ensure no change in medical condition has occurred since the last dive medical was completed ie. serious accident, illness or Decompression Illness.

2. For an up to date list of qualified diving doctors go to [www.spums.org.au/Divedocs](http://www.spums.org.au/Divedocs).

### **Enclosed Water:**

A body of water not influenced by strong current, wind or swell that has a clearly defined edge eg. swimming pools, aquariums and rock pools at low tide.

### **Endorsed Scuba Instructor:**

An endorsed scuba instructor is a recognised scuba instructor who has been endorsed by AUSI to teach snorkel diving after having successfully completed the AUSI Snorkel Instructor fitness tests as outlined in the AUSI Snorkel Diver Instructor Teaching Guidelines.

### **Free Fee Policy:**

“Free Fees” means that any membership fee payable to AUSI for registration or annual renewal will be rebated, in equal value, with non-transferable AUSI Certification Forms. This policy does not apply to non-certifying members.

**NOTE:** Non-transferable means for the use of the member paying the fee only.

### **Ideal Conditions:**

Refers to open water conditions where there is no current, calm surface conditions, tropical water temperature and visibility is at least nine metres (30 ft).

### **Maximum Ratios:**

Recommended maximum instructor/student ratio for ideal conditions.

Ratios should always be reduced if conditions are less than ideal or student ability dictates the need to do so.

**NOTE:** Where local authority ratios differ from AUSI ratios, then instructors must follow the most conservative ratio.

### **Medical History:**

A completed AUSI Medical History Form. This form can be photocopied from the AUSI Forms section of this manual or downloaded from [www.ausi.com.au](http://www.ausi.com.au).

**Medically Fit:**

Deemed medically fit for the activity as per the AUSI Medical History Form or by a medical practitioner which ever is required under the relevant AUSI Standard.

**Metric/Imperial Equivalents:**

The table below shows metric units used by AUSI and imperial equivalences that should be used by instructors in the USA:

Depth in metres	Depth in feet	Distance in metres	Distance in yards
1	3	5	6
1.5	5	25	30
3	10	50	55
6	20	100	110
9	30	200	220
12	40	250	275
15	50	500	550
18	60	800	880
21	70	1000	1100
24	80	Pressure in atmospheres	Pressure in psi
27	90	1	15
30	100	50	750
33	110	75	1000
36	120	100	1500
39	130	200	3000
Weight in kilograms	Weight in pounds	225	3400
1.4	3		

**Open Water:**

A body of water that is subject to the influence of tide, current, wind and waves or swell.

**Recognised Agency:**

A certification agency, which is approved by the AUSI Review Board.

**Registered AUSI Instructor:**

An AUSI Instructor who is deemed “*active*” ie a member of AUSI who has meet all the AUSI Annual Renewal requirements as per the relevant AUSI Standards.

**NOTE:** AUSI Certifications can only be issued by registered AUSI Snorkel Diver Instructors or higher or registered AUSI Level II Scuba Instructors or higher.

**Shall:**

Mandatory requirement.

**Should:**

Strong recommendation.

**Snorkel Diving:**

Snorkel Diving is intentionally going to depth using a mask, snorkel and fins where there is a possibility of achieving negative buoyancy.

**Snorkel Swimming:**

Snorkel Swimming is using mask, snorkel, fins and a buoyancy aid to ensure positive buoyancy at all times.