

AUSI Definitions Update – July 2008

Record of change: Current version is **July 2008 (0708)** and replaces September 2007 (0907)
September 2007 (0907) replaced October 2006 (1006)
October 2006 (1006) replaced May 2006 (0506)
May 2006 (0506) replaced October 2005 (1005)

NEW DEFINITIONS – June 2008

AUSI Examiner:

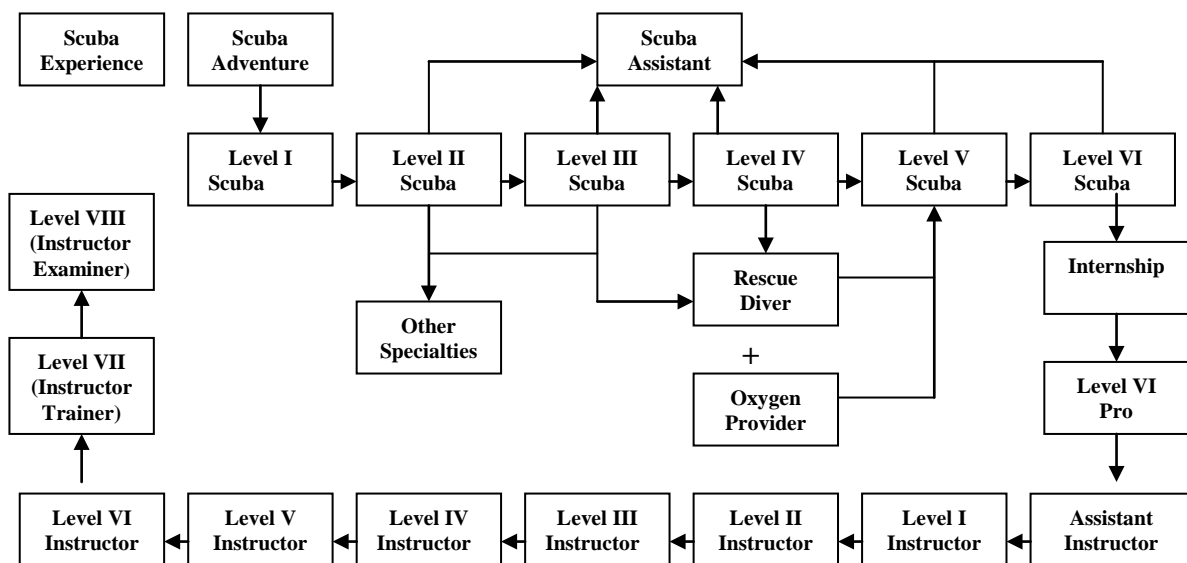
An approved independent AUSI Level VIII Scuba Instructor Trainer appointed by AUSI Head Office to conduct the final examination phase of an AUSI Level I Scuba Instructor Course.

AUSI Scuba Assistant :

A diver who is has completed an AUSI Assistant Scuba Instructor course but has not met the certification requirements as an AUSI Assistant Scuba Instructor. Whilst an AUSI Scuba Assistant is able to assist an AUSI Scuba Instructor to a level equivalent to their diving certification, instructor/student ratios cannot be increased.

AUSI Scuba Certification Pathway:

The chart below shows the relationship between the various AUSI Scuba Awards.



AUSI Scuba Learning Module:

An AUSI Scuba Learning Module is a theory module consisting of student course notes and a lesson review, which is formally presented by an AUSI Scuba Instructor during the training process. These modules are designed to assist learning from AUSI Scuba Adventure to AUSI Scuba Instructor.

A summary the current AUSI Scuba Training System's Scuba Learning Modules can be found on the AUSI web site: www.ausi.com.au.

Free Fee Policy:

There are no AUSI Joining Fees, AUSI Registration Fees or AUSI Renewal Fees for AUSI Certifying Professionals, AUSI Training Organisations or AUSI Cross Over Candidates however, there may be a minimum purchase requirement.

Note: AUSI Snorkel Swimming Instructors, AUSI Level VI Professionals (Dive Masters), AUSI Assistant Scuba Instructors (Assistant Instructors) and AUSI Scuba Adventure Instructors are non-certifying instructors and may be subject to a Joining Fee and an Annual Renewal Fee. For details consult the current AUSI Fee Fees Policy document, available on www.ausi.com.au.

Ideal Conditions:

Refers to a body of water where there is no strong current, calm surface conditions, tropical water temperature (ie greater than 22 degrees Celsius), visibility is at least nine metres (30 ft) and when no diver in the group carries a weight system of more than 5.6 kilograms (12lb).

Sheltered Water:

A body of water within a barrier, either natural or man-made including a jetty, not adversely influenced by strong current, wind, waves or swell.

Strong current:

A current too strong to comfortably swim against, as judged against the weakest diver.